

→ A2-MT 系列



A2-MT 系列

- 安装简单，方便使用
- 浇口快速冷却性能
- 使用于直接点浇口进胶的小产品
- 最大注塑重量为140g
- 可选钛合金隔热介子

系列	A2MT04	A2MT05
咀尖间距	10/16	24/32
长度	40~80	80
浇口直径Φ	0.6~1.5	0.6~2
流道直径Φ	4	5

注塑重量(g)		
低粘度	< 80	< 200
中粘度	< 60	< 100
高粘度	*	*

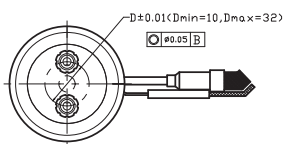
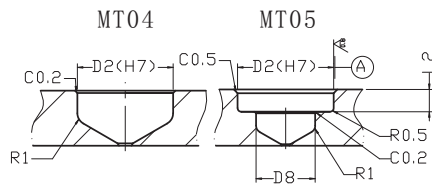
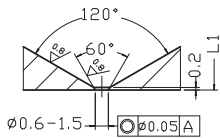
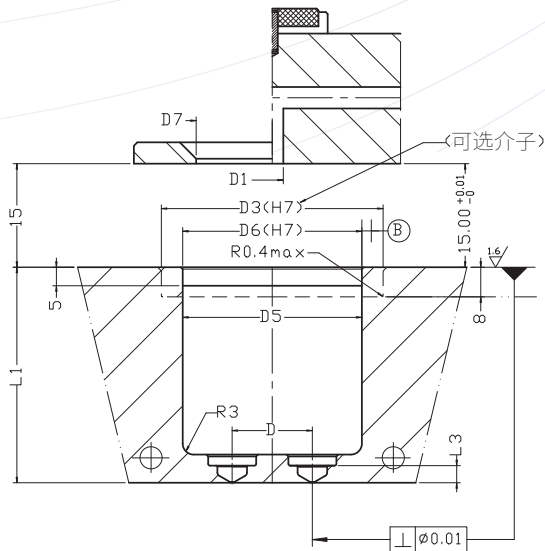
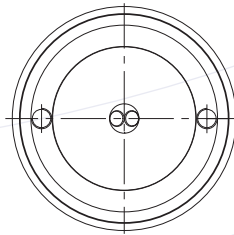
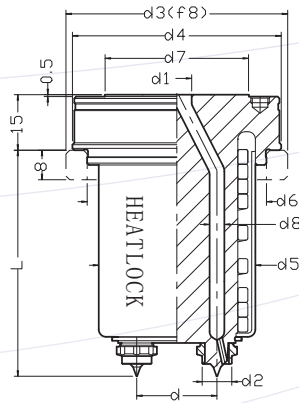
订单示例：

A2---MT---XX---XXX---XX---X

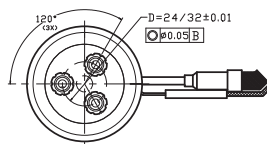
(系列) (型号) (L) (D) (咀尖数量)

A2 MT 04 040 10 2

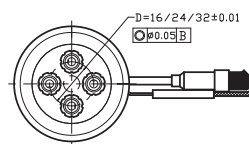
→ A2 MT 指导



2 Gates



3 Gates



4 Gates

*可按客户要求定做特殊中心距（尺寸D）或非标长度热阻

→ A2MT 尺寸

系列	热咀										模具										
	L	d	d1	d2	d3	d4	d5	d6	d7	d8	L1	L2	L3	D	D1	D2	D3	D5	D6	D7	D8
A2MT04040102	40	10	8	8	T50	48	34	39	32	4	40.13	—	4.5	10	8	8	T50	39	39	34	—
A2MT04080102	80										80.23										
A2MT04060162	60	16	8	8	T54	52	38	44	35	4	60.18	—	4.5	16	8	8	T54	44	44	37	—
A2MT04080162	80										80.23										
A2MT04060164	60										60.18										
A2MT04080164	80										80.23										
A2MT05080242	80	24	8	10	T65	61	48	53	44	5	80.23	2	3.5	24	8	10	T65	53	53	46	7.5
A2MT05080243	80																				
A2MT05080244	80																				
A2MT05080322	80	32	8	10	T73	69	56	61	52	5	80.23	2	5.5	32	8	10	T73	61	61	54	7.5
A2MT05080323	80																				
A2MT05080324	80																				