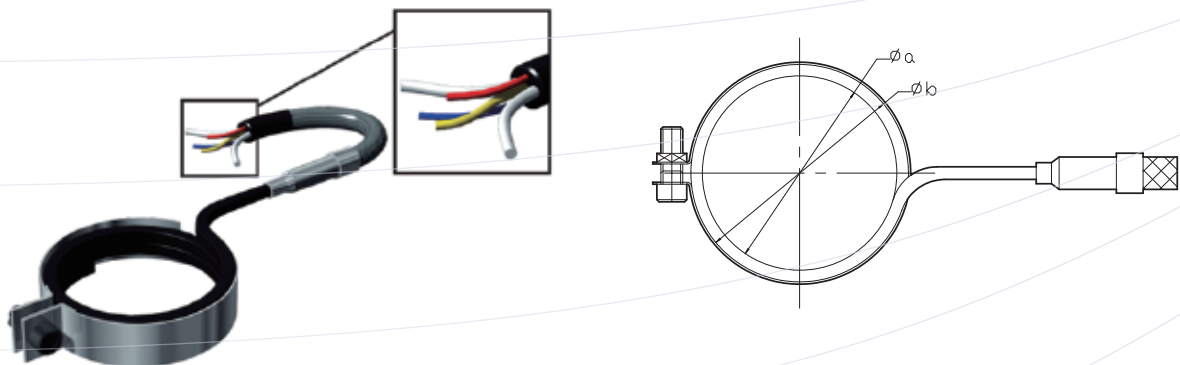


Band heater



Power	White (2x)	Power
	Yellow/Green	Earth
Thermocouple	Blue	Minus [-]
	Red	Positive [+]

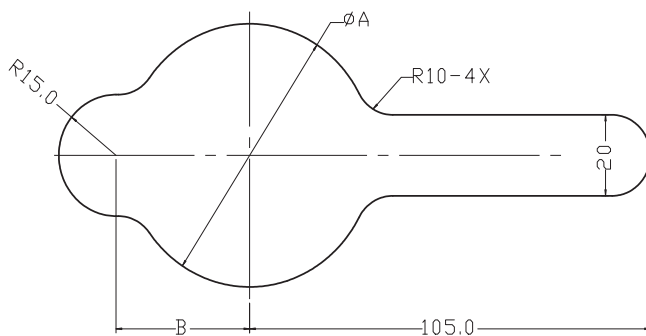
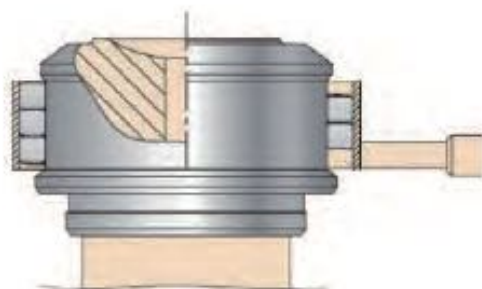
Size	Part No.	Dimension	a	b	Watts
A1-1	BH127150	33x10	27	33	150
A1-T-1	BH230200	36x10	30	36	200
A1-2	BH233200	39x10	33	39	200
A1-T-2	BH235250	41x10	35	41	250
A1-3/XL	BH347250	53x10	47	53	250
A1-4/XL	BH451300	57x10	51	57	300
MEGA	BO74015600	74x15	74	80	600

Single cavity application:

A heater feed bush is recommended for all polymers except PE PP and PS.

Important:

For best performance always connect band heater to separate temperature controller zone



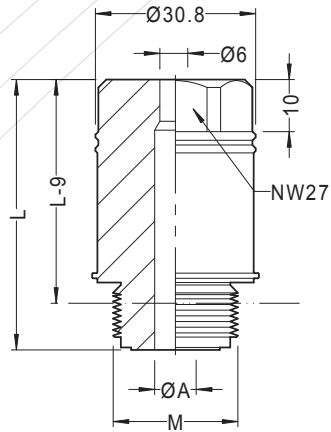
Band heater bore

Assembly of band heater:

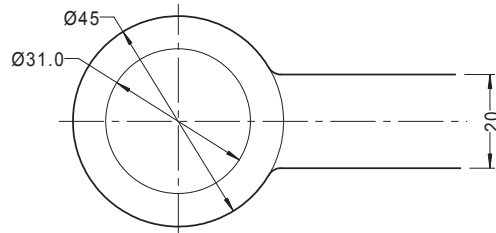
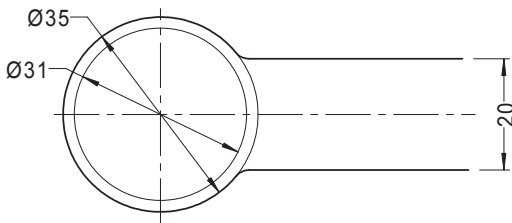
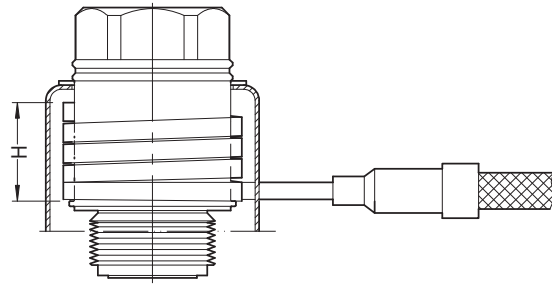
- Remove metal band.
- Assembly coilheater onto nozzle head.
- Assembly an fix metal band outside the heater.

Size	Part No.	A	B
A1-1	BH127150	40	30
A1-T-1	BH230200	43	32
A1-2	BH233200	45	32
A1-T-2	BH235250	48	34
A1-3/XL	BH347250	62	40
A1-4/XL	BH451300	65	40
MEGA	BO74015600	90	60

Feed bush



Feed bush with band heater



Item code	M	L	A	H	Heater	W	Reflector	Clip ring
DSP5202408	24X1.5	52	8	20	BS230020250	250	RFT438200-21	CUSH-00296
DSP5202410			10					
DSP5203008	30X1.5	52	8	20	BS230020250	250	RFT438200-21	CUSH-00296
DSP5203010			10					
DSP7002408	24X1.5	70	8	36	BS230036400	400	RFT438200-41	CUSH-00296
DSP7002410			10					
DSP7003008	30X1.5	70	8	36	BS230036400	400	RFT438200-41	CUSH-00296
DSP7003010			10					

Please note:

- For resins with high melt temperature than 250 °C use a rear band heater for maximum temperature control
- NOTE : control band heater with a separate temperature controller